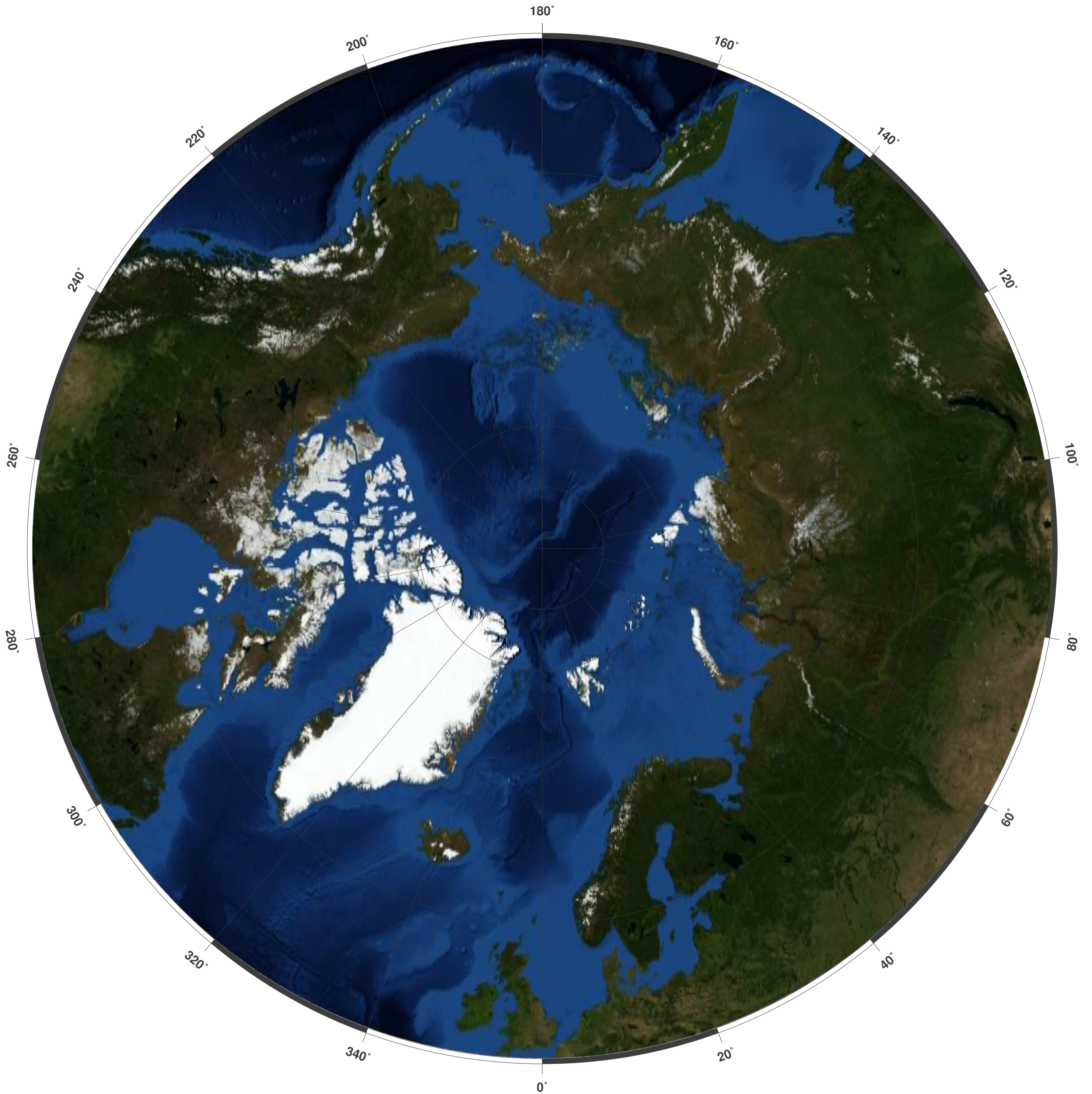


Arctic: Surface, Bathymetrie and Topography



Map-License:

This map is licensed under the Creative Commons Attribution 3.0 License (<http://creativecommons.org/licenses/by/3.0/>). Please cite the GinkgoMaps-project or link back (<http://www.ginkgomaps.com>).

Parameter and used data:

Map Projection: Polar Stereographic; Map Center: lat 90°; lon 0°; Visualized Data: Satellite image (NASA Blue Marble NG) provided by <http://visibleearth.nasa.gov>